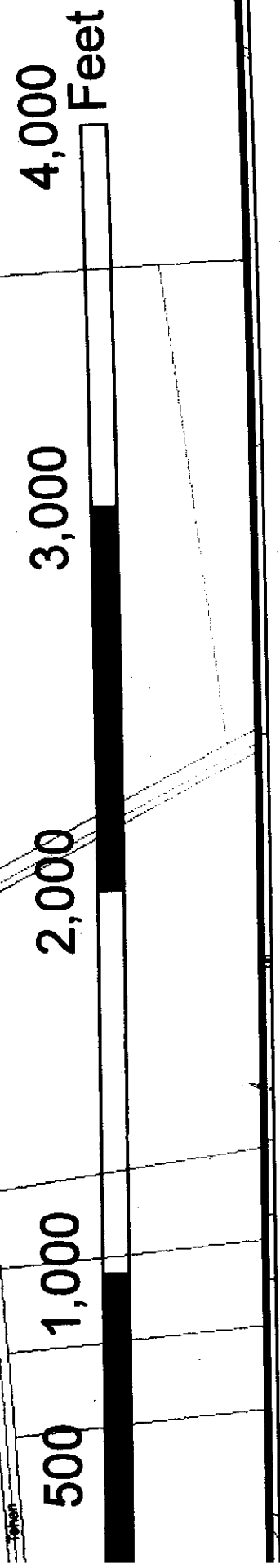


**tail Insert
h = 400 feet**



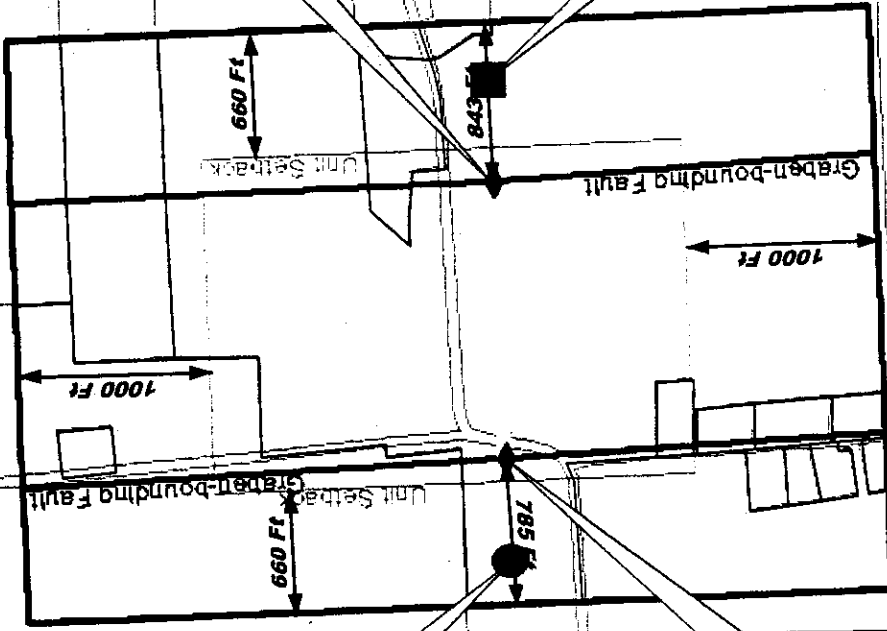
RECEIVED
NOV 30 2009
DIVISION OF
MINERAL RESOURCES

**COOK 1
316.90 Acres
Town of Dryden, Tompkins County, NY
Revised October 30, 2009**

**Surveyed Surface Location: 42.476800, -76.326210
Proposed Bottom Hole Location: 42.483800, -76.326500**

Top of Proposed Productive Section
7770 MD
7524 TVD
42.482298, -76.326437

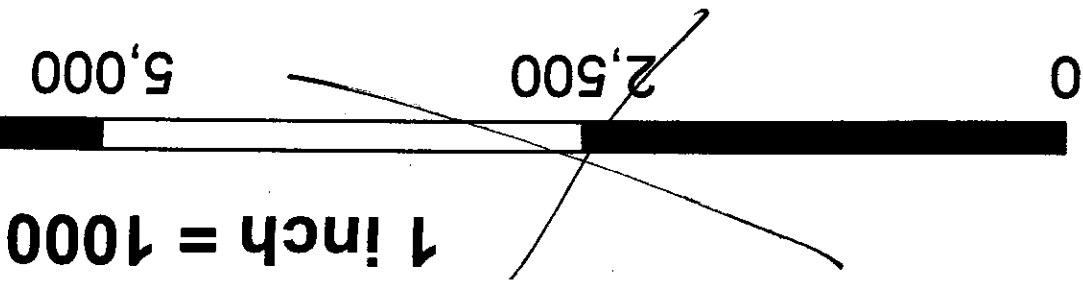
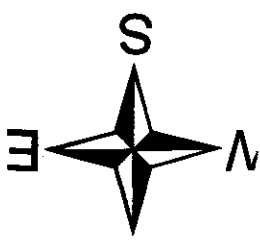
Anschutz Exploration Corp.
COOK 1
Surveyed Surface Location
76800, -76.326210

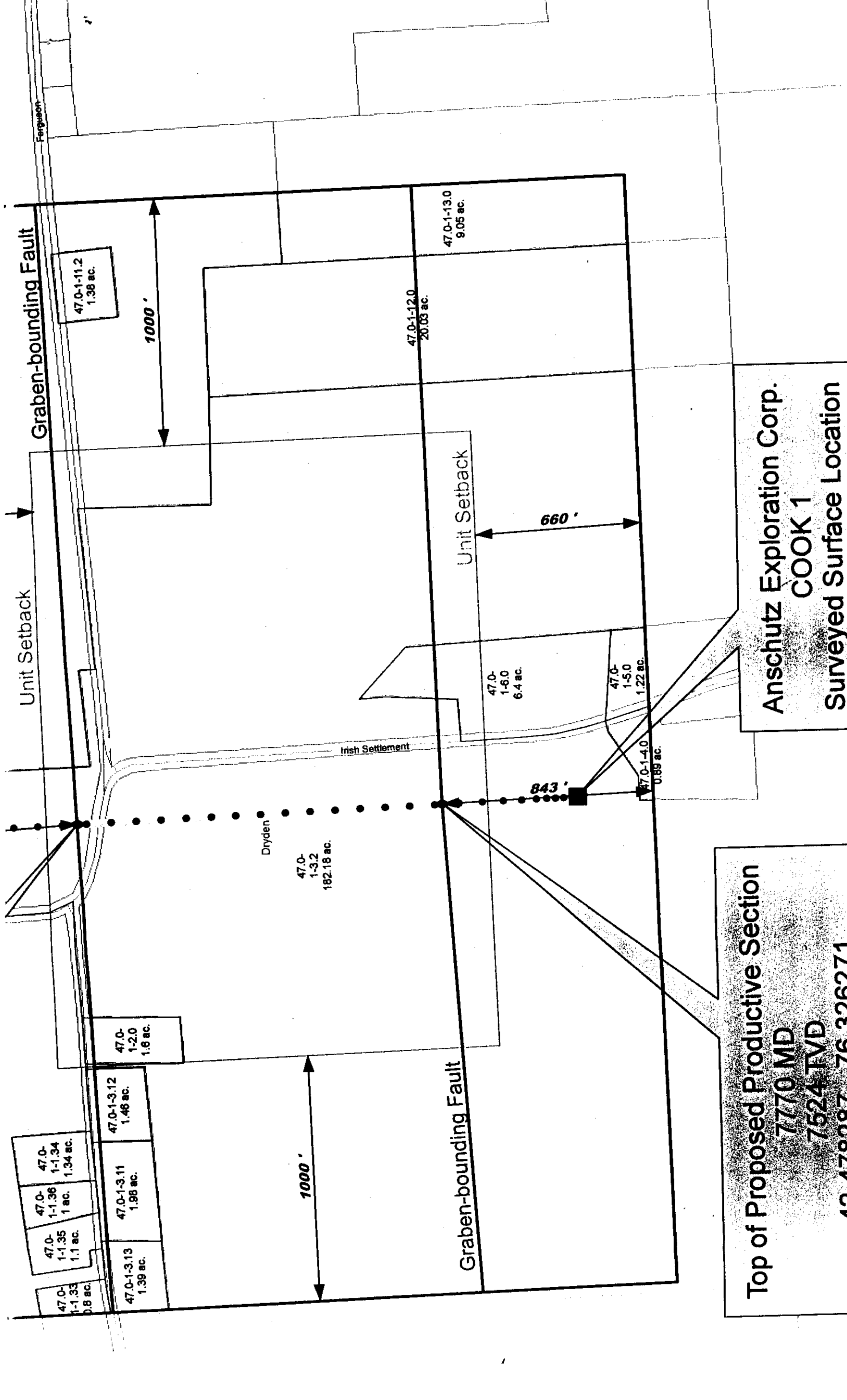


Bottom Hole Location
9788 MD
7476 TVD
42.483800, -76.3265000

Bottom of Productive Section
9240 MD
7487 TVD
42.482298, -76.326437

1 inch = 400 feet





Graben-bounding Fault

Unit Setback

1000'

660'

Unit Setback

Irish Settlement

Dryden

843'

47.0-1-11.2
1.38 ac.

47.0-1-12.0
20.03 ac.

47.0-1-13.0
9.05 ac.

47.0-1-2.0
1.6 ac.

47.0-1-3.2
182.18 ac.

47.0-1-6.0
6.4 ac.

47.0-1-5.0
1.22 ac.

47.0-1-4.0
0.89 ac.

47.0-1-1.33
0.8 ac.

47.0-1-1.35
1.1 ac.

47.0-1-1.36
1 ac.

47.0-1-1.34
1.34 ac.

47.0-1-3.13
1.39 ac.

47.0-1-3.11
1.98 ac.

47.0-1-3.12
1.46 ac.

Graben-bounding Fault

1000'

Anschutz Exploration Corp.
COOK 1
Surveyed Surface Location

Top of Proposed Productive Section
7770 MD
7524 TVD
10 478987 76 326271