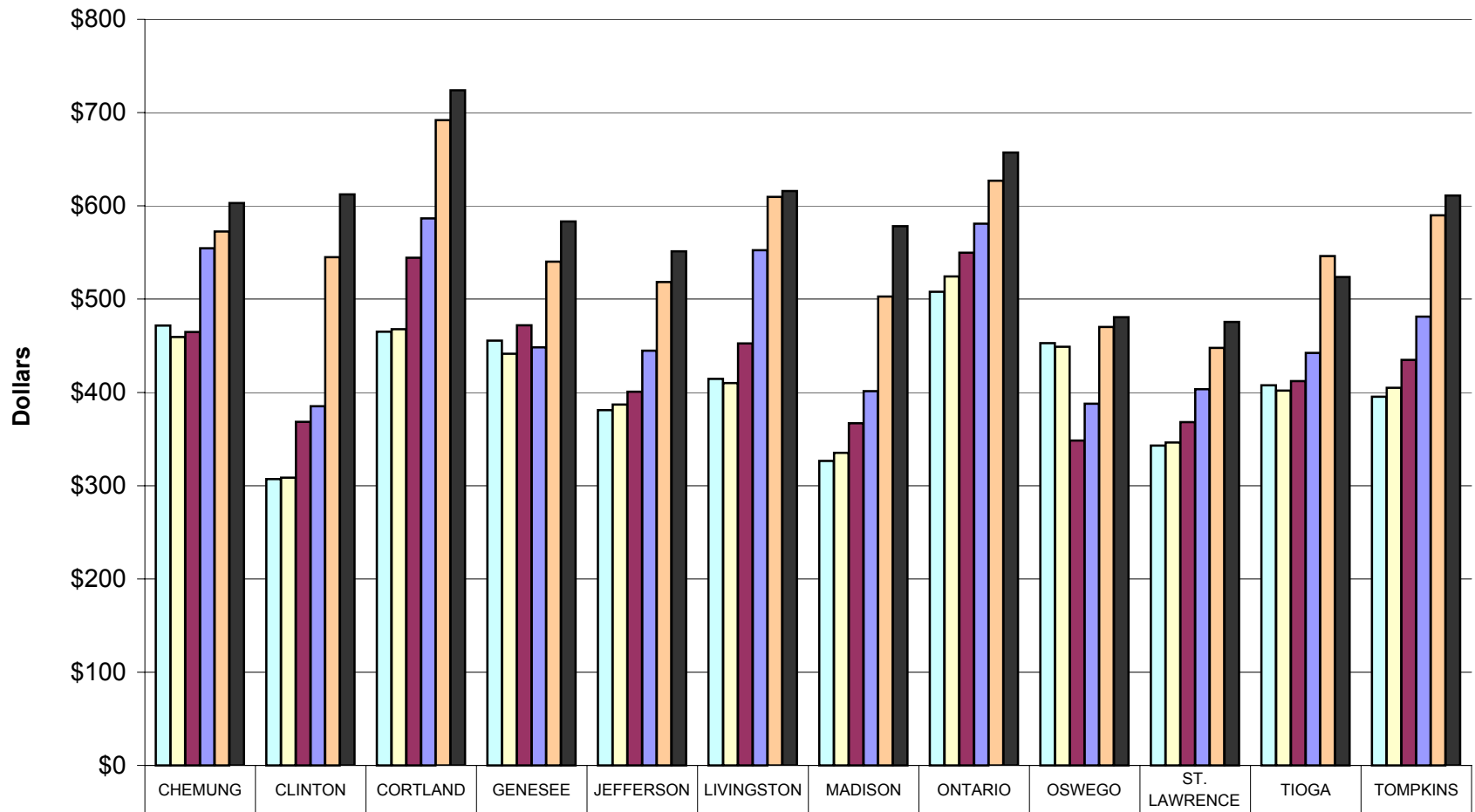




Per Capita Sales and Tax Levy Comparison for Contiguous and Like Counties



2000 Per Capita Sales & Levy	\$472	\$307	\$465	\$456	\$381	\$414	\$327	\$508	\$453	\$343	\$408	\$395
2001 Per Capita Sales & Levy	\$459	\$309	\$468	\$441	\$387	\$410	\$335	\$524	\$449	\$346	\$402	\$405
2002 Per Capita Sales & Levy	\$465	\$368	\$544	\$472	\$401	\$453	\$367	\$550	\$348	\$368	\$412	\$435
2003 Per Capita Sales & Levy	\$555	\$385	\$587	\$448	\$445	\$552	\$401	\$581	\$388	\$403	\$442	\$481
2004 Per Capita Sales & Levy	\$573	\$545	\$692	\$540	\$518	\$610	\$503	\$627	\$470	\$448	\$546	\$590
2005 Per Capita Sales & Levy	\$603	\$612	\$724	\$583	\$551	\$616	\$578	\$657	\$481	\$476	\$524	\$611

Source:
 2000-2003 Data - Office of the New York State Comptroller
 2004-2005 Data - New York State Association of Counties
 Population Data - US Census Bureau, 2000