

31.212

67.33 Ac

28

31.84 Ac C  
47.74 Ac C G

26.8

4.95 Ac C

19.49 Ac C

12.71 Ac C

31.33

6.97 Ac

31.32  
10.20 Ac

31.311

8.12 Ac

31.312

1.97  
Ac

30.2

43.51 Ac C  
58.74 Ac C G

32.23

1.48  
Ac

32.24

2.52  
Ac

33.1

1.95 Ac

32.22

31.26 Ac C

3:

34.0:

32.1

9.70 Ac

8.37 Ac

35

27.97 Ac C

34

26

14

AREA

[Send To Printer](#)

[Back To TerraServer](#)

[Change to 11x17 Print Size](#)

[Show Grid Lines](#)

[Change to Landscape](#)

**USGS 4 km SE of Dryden, New York, United States 27 Mar 1995**



0 200M

0 200yd

Image courtesy of the U.S. Geological Survey

© 2004 Microsoft Corporation. [Terms of Use](#) [Privacy Statement](#)

Send To Printer    Back To TerraServer    Change to 11x17 Print Size    Show Grid Lines    Change to Landscape

USGS 4 km SE of Dryden, New York, United States 01 Jul 1990

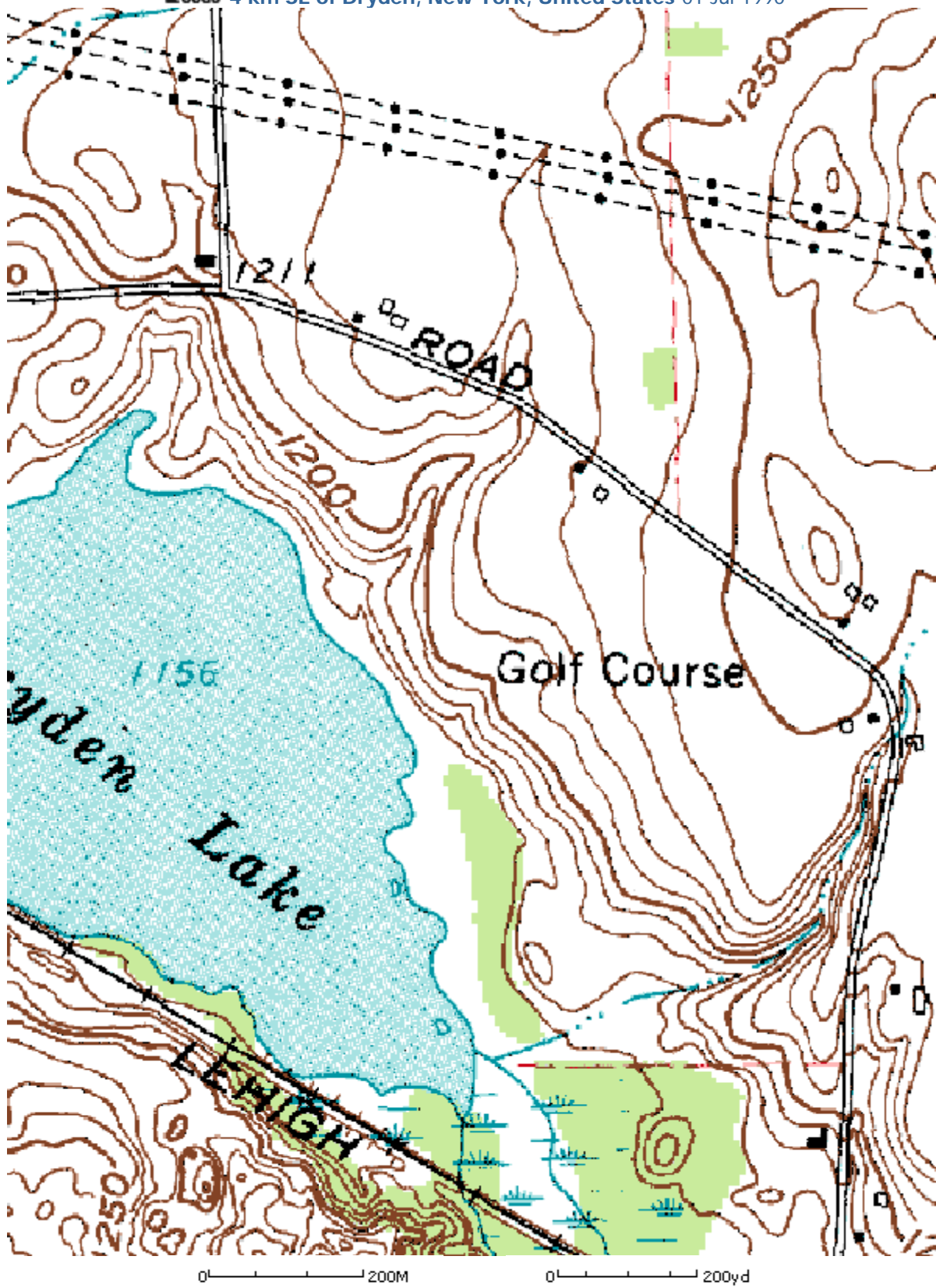








Image courtesy of the U.S. Geological Survey  
© 2004 Microsoft Corporation.    [Terms of Use](#)    [Privacy Statement](#)

# LAKEVIEW GOLF COURSE

## ANALYSIS OF 18-HOLE LAYOUT

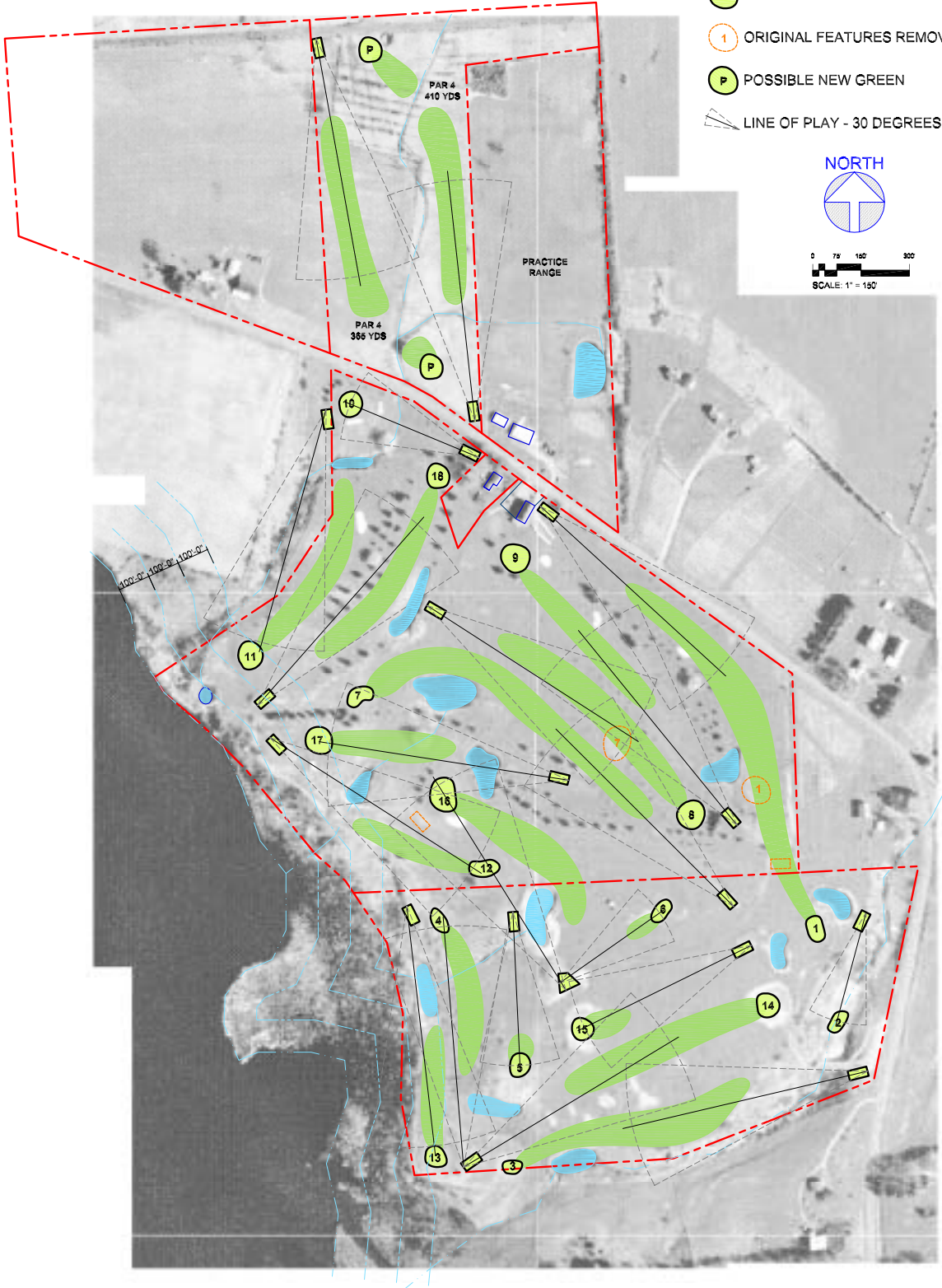
MAY 13, 2004

-  PROPERTY LINE
-  TEES
-  GREENS
-  ORIGINAL FEATURES REMOVED
-  POSSIBLE NEW GREEN
-  LINE OF PLAY - 30 DEGREES, 250 YARDS

NORTH



0 75 150 300  
SCALE: 1" = 150'



Prepared By: Noah Demarest, Assoc. AIA  
TALLMAN & DEMAREST ARCHITECTS, LLP